

APPENDIX H: ENVIRONMENTAL JUSTICE



EJSCREEN Report (Version 2019)

0.5 miles Ring around the Corridor

LOUISIANA, EPA Region 6

Approximate Population: 2,700

Input Area (sq. miles): 5.01

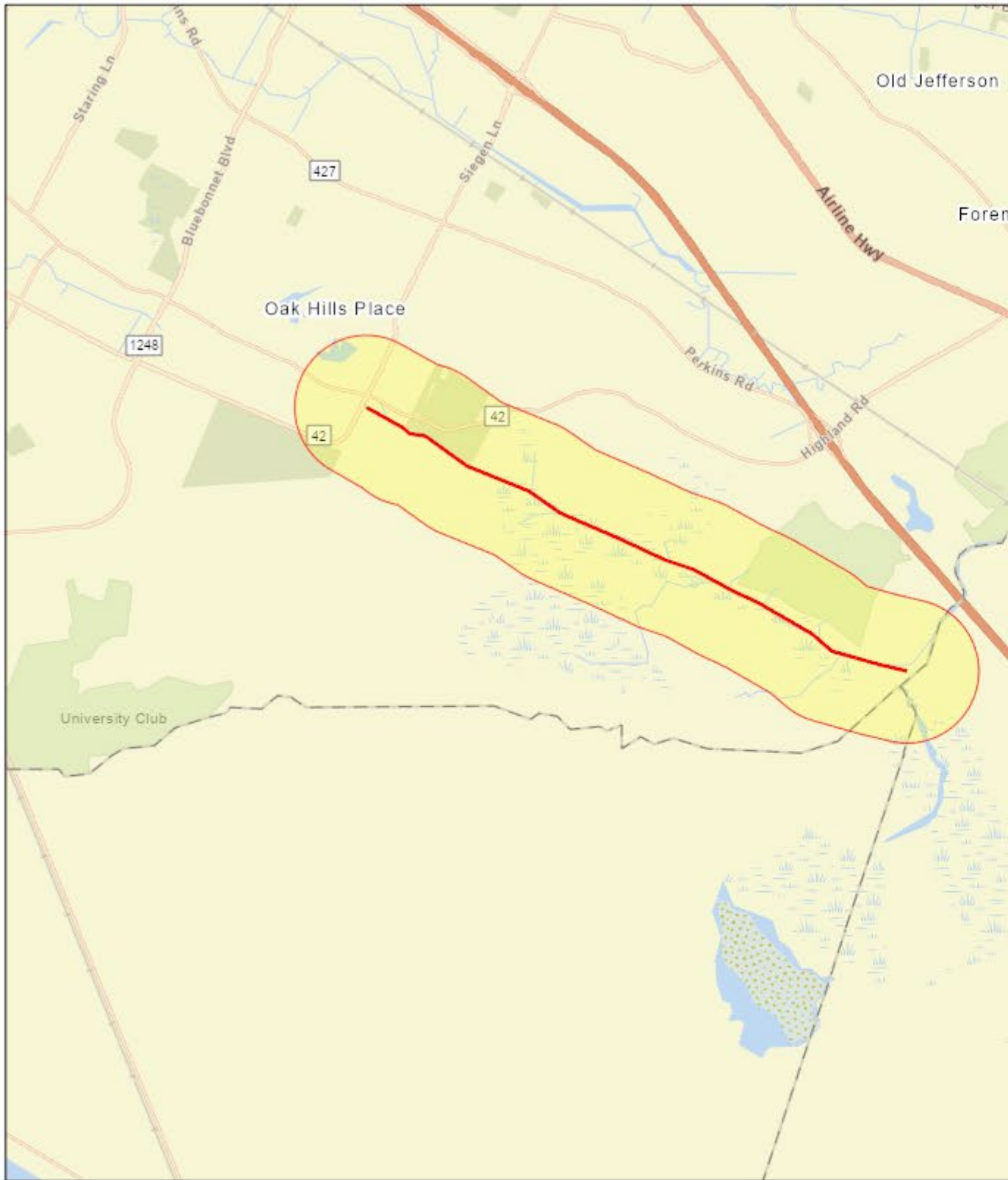
Bayou Fountain Creek

| Selected Variables | Percentile in State | Percentile in EPA Region | Percentile in USA |
|---|---------------------|--------------------------|-------------------|
| EJ Indexes | | | |
| EJ Index for Particulate Matter (PM 2.5) | 3 | 2 | 2 |
| EJ Index for Ozone | 4 | 4 | 6 |
| EJ Index for NATA* Diesel PM | 3 | 2 | 3 |
| EJ Index for NATA* Air Toxics Cancer Risk | 1 | 0 | 0 |
| EJ Index for NATA* Respiratory Hazard Index | 3 | 1 | 0 |
| EJ Index for Traffic Proximity and Volume | 1 | 1 | 4 |
| EJ Index for Lead Paint Indicator | 41 | 28 | 48 |
| EJ Index for Superfund Proximity | 12 | 6 | 17 |
| EJ Index for RMP Proximity | 12 | 10 | 14 |
| EJ Index for Hazardous Waste Proximity | 14 | 12 | 23 |
| EJ Index for Wastewater Discharge Indicator | 3 | 2 | 4 |

EJ Index for the Selected Area Compared to All People's Blockgroups in the State/Region/USEJ Indexes
 PM 2.5 Ozone NATA Diesel PM NATA Cancer Risk NATA Respiratory HI Traffic Proximity Lead Paint Indicator Superfund Proximity RMP Proximity Hazardous Waste Proximity Wastewater Discharge Indicator
 Percentile 0 2 5 5 0 7 5 10 0

State Percentile Regional Percentile National Percentile

This report shows the values for environmental and demographic indicators and EJSCREEN indexes. It shows environmental and demographic raw data (e.g., the estimated concentration of ozone in the air), and also shows what percentile each raw data value represents. These percentiles provide perspective on how the selected block group or buffer area compares to the entire state, EPA region, or nation. For example, if a given location is at the 95th percentile nationwide, this means that only 5 percent of the US population has a higher block group value than the average person in the location being analyzed. The years for which the data are available, and the methods used, vary across these indicators. Important caveats and uncertainties apply to this screening-level information, so it is essential to understand the limitations on appropriate interpretations and applications of these indicators. Please see EJSCREEN documentation for discussion of these issues before using reports.



March 27, 2020

 Bayou Fountain Creek

Sites reporting to EPA

| | |
|--|---|
| Superfund NPL | 0 |
| Hazardous Waste Treatment, Storage, and Disposal Facilities (TSDF) | 0 |

| Selected Variables | Value | State | | EPA Region | | USA | |
|---|--------|-------|-------|------------|----------|-------|----------|
| | | Avg. | %tile | Avg. | %tile | Avg. | %tile |
| Environmental Indicators | | | | | | | |
| Particulate Matter (PM 2.5 in $\mu\text{g}/\text{m}^3$) | 10.1 | 8.62 | 94 | 8.37 | 98 | 8.3 | 90 |
| Ozone (ppb) | 37.1 | 36.8 | 55 | 39.4 | 33 | 43 | 18 |
| NATA* Diesel PM ($\mu\text{g}/\text{m}^3$) | 0.486 | 0.454 | 63 | 0.401 | 60-70th | 0.479 | 60-70th |
| NATA* Air Toxics Cancer Risk (risk per MM) | 93 | 51 | 96 | 36 | 95-100th | 32 | 95-100th |
| NATA* Respiratory Hazard Index | 0.75 | 0.61 | 90 | 0.45 | 95-100th | 0.44 | 95-100th |
| Traffic Proximity and Volume (daily traffic count/distance to road) | 430 | 330 | 79 | 400 | 76 | 750 | 65 |
| Lead Paint Indicator (% pre-1960s housing) | 0.0027 | 0.21 | 8 | 0.17 | 20 | 0.28 | 10 |
| Superfund Proximity (site count/km distance) | 0.041 | 0.086 | 43 | 0.081 | 50 | 0.13 | 35 |
| RMP Proximity (facility count/km distance) | 0.21 | 0.9 | 40 | 0.82 | 36 | 0.74 | 40 |
| Hazardous Waste Proximity (facility count/km distance) | 0.16 | 0.75 | 35 | 0.75 | 35 | 4 | 28 |
| Wastewater Discharge Indicator (toxicity-weighted concentration/m distance) | 0.047 | 27 | 90 | 9.8 | 89 | 14 | 87 |
| Demographic Indicators | | | | | | | |
| Demographic Index | 8% | 40% | 2 | 44% | 1 | 36% | 5 |
| Minority Population | 12% | 41% | 19 | 51% | 9 | 39% | 26 |
| Low Income Population | 4% | 40% | 1 | 37% | 3 | 33% | 3 |
| Linguistically Isolated Population | 0% | 2% | 63 | 6% | 37 | 4% | 45 |
| Population with Less Than High School Education | 2% | 16% | 5 | 16% | 7 | 13% | 10 |
| Population under Age 5 | 2% | 7% | 12 | 7% | 10 | 6% | 12 |
| Population over Age 64 | 32% | 14% | 98 | 13% | 97 | 15% | 95 |

*The National-Scale Air Toxics Assessment (NATA) is EPA's ongoing, comprehensive evaluation of air toxics in the United States. EPA developed the NATA to prioritize air toxics, emission sources, and locations of interest for further study. It is important to remember that NATA provides broad estimates of health risks over geographic areas of the country, not definitive risks to specific individuals or locations. More information on the NATA analysis can be found at: <https://www.epa.gov/national-air-toxics-assessment>.

For additional information, see: www.epa.gov/environmentaljustice

EJSCREEN is a screening tool for pre-decisional use only. It can help identify areas that may warrant additional consideration, analysis, or outreach. It does not provide a basis for decision-making, but it may help identify potential areas of EJ concern. Users should keep in mind that screening tools are subject to substantial uncertainty in their demographic and environmental data, particularly when looking at small geographic areas. Important caveats and uncertainties apply to this screening-level information,

so it is essential to understand the limitations on appropriate interpretations and applications of these indicators. Please see EJSCREEN documentation for discussion of these issues before using reports. This screening tool does not provide data on every environmental impact and demographic factor that may be relevant to a particular location. EJSCREEN outputs should be supplemented with additional information and local knowledge before taking any action to address potential EJ concerns.



EJSCREEN Report (Version 2019)

.5 miles Ring around the Corridor

LOUISIANA, EPA Region 6

Approximate Population: 5,328

Input Area (sq. miles): 3.86

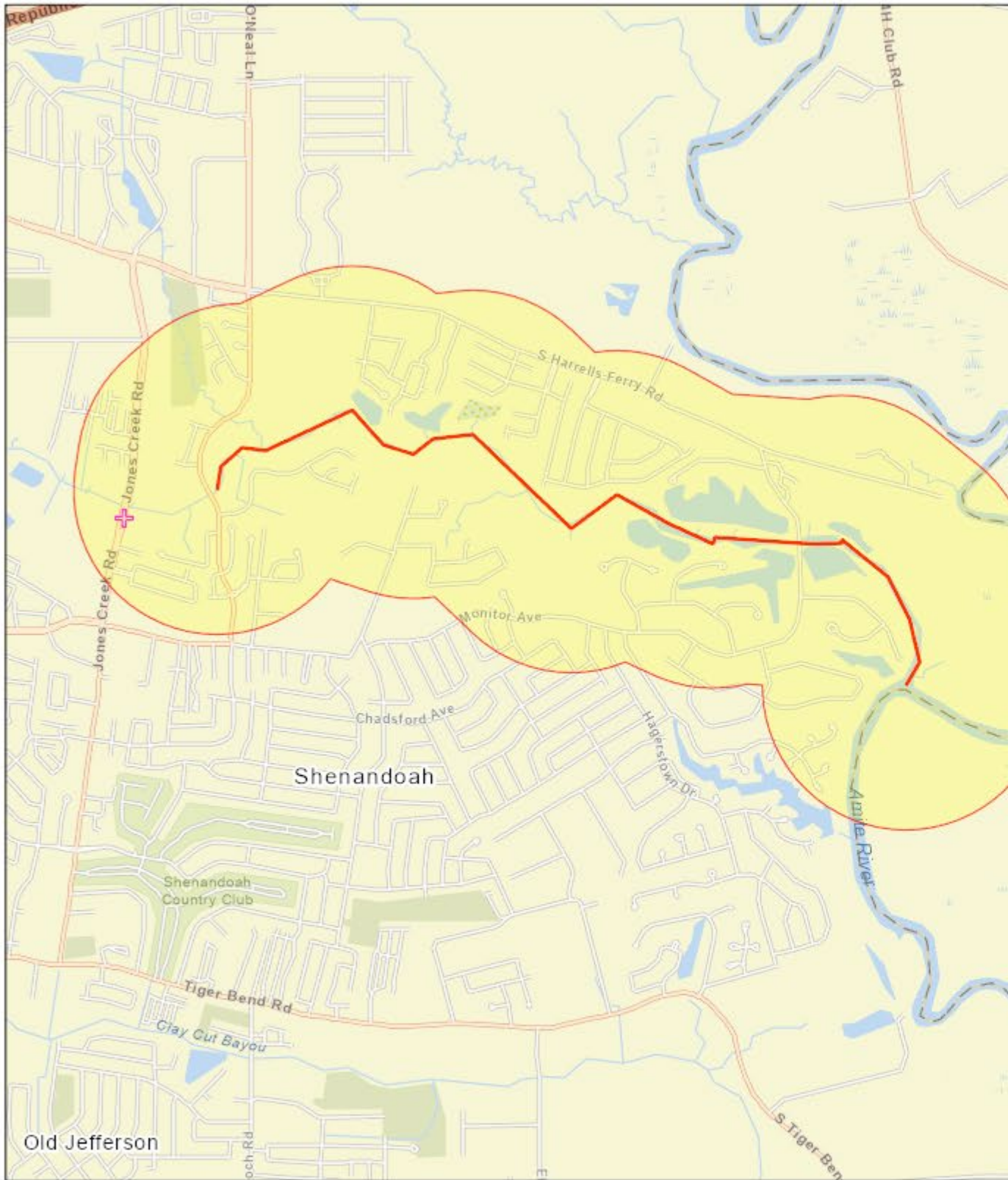
Lower Jones Creek

| Selected Variables | Percentile in State | Percentile in EPA Region | Percentile in USA |
|---|---------------------|--------------------------|-------------------|
| EJ Indexes | | | |
| EJ Index for Particulate Matter (PM 2.5) | 17 | 14 | 19 |
| EJ Index for Ozone | 21 | 19 | 30 |
| EJ Index for NATA* Diesel PM | 18 | 14 | 21 |
| EJ Index for NATA* Air Toxics Cancer Risk | 11 | 5 | 3 |
| EJ Index for NATA* Respiratory Hazard Index | 18 | 10 | 11 |
| EJ Index for Traffic Proximity and Volume | 31 | 26 | 40 |
| EJ Index for Lead Paint Indicator | 45 | 31 | 51 |
| EJ Index for Superfund Proximity | 17 | 10 | 23 |
| EJ Index for RMP Proximity | 36 | 28 | 41 |
| EJ Index for Hazardous Waste Proximity | 31 | 26 | 41 |
| EJ Index for Wastewater Discharge Indicator | 1 | 1 | 2 |

EJ Index for the Selected Area Compared to All People's Blockgroups in the State/Region/USEJ Indexes
 PM 2.5 Ozone NATA Diesel PM NATA Cancer Risk NATA Respiratory HI Traffic Proximity Lead Paint Indicator Superfund Proximity RMP Proximity Hazardous Waste Proximity Wastewater Discharge Indicator
 Percentile 0 25 50 75 100

State Percentile Regional Percentile National Percentile

This report shows the values for environmental and demographic indicators and EJSCREEN indexes. It shows environmental and demographic raw data (e.g., the estimated concentration of ozone in the air), and also shows what percentile each raw data value represents. These percentiles provide perspective on how the selected block group or buffer area compares to the entire state, EPA region, or nation. For example, if a given location is at the 95th percentile nationwide, this means that only 5 percent of the US population has a higher block group value than the average person in the location being analyzed. The years for which the data are available, and the methods used, vary across these indicators. Important caveats and uncertainties apply to this screening-level information, so it is essential to understand the limitations on appropriate interpretations and applications of these indicators. Please see EJSCREEN documentation for discussion of these issues before using reports.



March 27, 2020

Lower Jones Creek

| Sites reporting to EPA | |
|--|---|
| Superfund NPL | 0 |
| Hazardous Waste Treatment, Storage, and Disposal Facilities (TSDF) | 0 |

| Selected Variables | Value | State | | EPA Region | | USA | |
|---|--------|-------|-------|------------|----------|-------|----------|
| | | Avg. | %tile | Avg. | %tile | Avg. | %tile |
| Environmental Indicators | | | | | | | |
| Particulate Matter (PM 2.5 in $\mu\text{g}/\text{m}^3$) | 9.95 | 8.62 | 92 | 8.37 | 94 | 8.3 | 88 |
| Ozone (ppb) | 36.8 | 36.8 | 47 | 39.4 | 29 | 43 | 17 |
| NATA* Diesel PM ($\mu\text{g}/\text{m}^3$) | 0.484 | 0.454 | 63 | 0.401 | 60-70th | 0.479 | 60-70th |
| NATA* Air Toxics Cancer Risk (risk per MM) | 82 | 51 | 94 | 36 | 95-100th | 32 | 95-100th |
| NATA* Respiratory Hazard Index | 0.7 | 0.61 | 84 | 0.45 | 95-100th | 0.44 | 95-100th |
| Traffic Proximity and Volume (daily traffic count/distance to road) | 73 | 330 | 40 | 400 | 34 | 750 | 30 |
| Lead Paint Indicator (% pre-1960s housing) | 0.0012 | 0.21 | 8 | 0.17 | 20 | 0.28 | 10 |
| Superfund Proximity (site count/km distance) | 0.068 | 0.086 | 62 | 0.081 | 68 | 0.13 | 53 |
| RMP Proximity (facility count/km distance) | 0.1 | 0.9 | 17 | 0.82 | 14 | 0.74 | 17 |
| Hazardous Waste Proximity (facility count/km distance) | 0.11 | 0.75 | 27 | 0.75 | 26 | 4 | 21 |
| Wastewater Discharge Indicator (toxicity-weighted concentration/m distance) | 0.98 | 27 | 96 | 9.8 | 97 | 14 | 95 |
| Demographic Indicators | | | | | | | |
| Demographic Index | 21% | 40% | 25 | 44% | 17 | 36% | 33 |
| Minority Population | 33% | 41% | 49 | 51% | 33 | 39% | 52 |
| Low Income Population | 10% | 40% | 4 | 37% | 10 | 33% | 13 |
| Linguistically Isolated Population | 0% | 2% | 63 | 6% | 36 | 4% | 45 |
| Population with Less Than High School Education | 7% | 16% | 23 | 16% | 29 | 13% | 37 |
| Population under Age 5 | 3% | 7% | 21 | 7% | 17 | 6% | 22 |
| Population over Age 64 | 15% | 14% | 60 | 13% | 66 | 15% | 57 |

*The National-Scale Air Toxics Assessment (NATA) is EPA's ongoing, comprehensive evaluation of air toxics in the United States. EPA developed the NATA to prioritize air toxics, emission sources, and locations of interest for further study. It is important to remember that NATA provides broad estimates of health risks over geographic areas of the country, not definitive risks to specific individuals or locations. More information on the NATA analysis can be found at: <https://www.epa.gov/national-air-toxics-assessment>.

For additional information, see: www.epa.gov/environmentaljustice

EJSCREEN is a screening tool for pre-decisional use only. It can help identify areas that may warrant additional consideration, analysis, or outreach. It does not provide a basis for decision-making, but it may help identify potential areas of EJ concern. Users should keep in mind that screening tools are subject to substantial uncertainty in their demographic and environmental data, particularly when looking at small geographic areas. Important caveats and uncertainties apply to this screening-level information,

so it is essential to understand the limitations on appropriate interpretations and applications of these indicators. Please see EJSCREEN documentation for discussion of these issues before using reports. This screening tool does not provide data on every environmental impact and demographic factor that may be relevant to a particular location. EJSCREEN outputs should be supplemented with additional information and local knowledge before taking any action to address potential EJ concerns.



EJSCREEN Report (Version 2019)

0.5 miles Ring around the Corridor

LOUISIANA, EPA Region 6

Approximate Population: 2,372

Input Area (sq. miles): 3.98

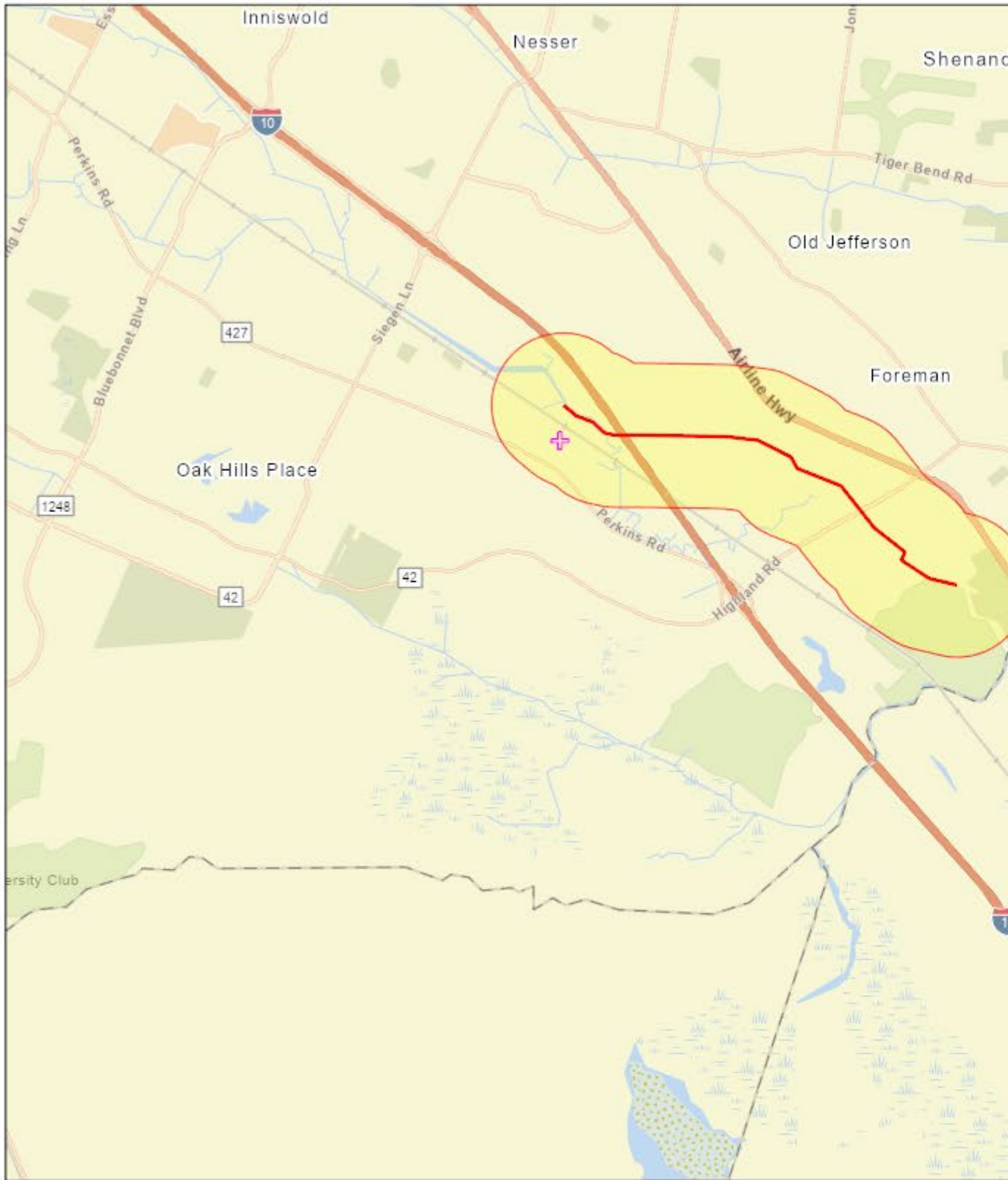
Ward Creek

| Selected Variables | Percentile in State | Percentile in EPA Region | Percentile in USA |
|---|---------------------|--------------------------|-------------------|
| EJ Indexes | | | |
| EJ Index for Particulate Matter (PM 2.5) | 41 | 34 | 49 |
| EJ Index for Ozone | 43 | 36 | 52 |
| EJ Index for NATA* Diesel PM | 34 | 27 | 40 |
| EJ Index for NATA* Air Toxics Cancer Risk | 36 | 26 | 34 |
| EJ Index for NATA* Respiratory Hazard Index | 41 | 31 | 42 |
| EJ Index for Traffic Proximity and Volume | 21 | 18 | 31 |
| EJ Index for Lead Paint Indicator | 54 | 52 | 62 |
| EJ Index for Superfund Proximity | 39 | 29 | 46 |
| EJ Index for RMP Proximity | 47 | 38 | 54 |
| EJ Index for Hazardous Waste Proximity | 44 | 36 | 53 |
| EJ Index for Wastewater Discharge Indicator | 5 | 4 | 7 |

EJ Index for the Selected Area Compared to All People's Blockgroups in the State/Region/USEJ Indexes
 PM 2.5 Ozone NATA Diesel PM NATA Cancer Risk NATA Respiratory HI Traffic Proximity Lead Paint Indicator Superfund Proximity RMP Proximity Hazardous Waste Proximity Wastewater Discharge Indicator
 Percentile 0 25 50 75 100

State Percentile Regional Percentile National Percentile

This report shows the values for environmental and demographic indicators and EJSCREEN indexes. It shows environmental and demographic raw data (e.g., the estimated concentration of ozone in the air), and also shows what percentile each raw data value represents. These percentiles provide perspective on how the selected block group or buffer area compares to the entire state, EPA region, or nation. For example, if a given location is at the 95th percentile nationwide, this means that only 5 percent of the US population has a higher block group value than the average person in the location being analyzed. The years for which the data are available, and the methods used, vary across these indicators. Important caveats and uncertainties apply to this screening-level information, so it is essential to understand the limitations on appropriate interpretations and applications of these indicators. Please see EJSCREEN documentation for discussion of these issues before using reports.



March 27, 2020

— Ward Creek

| Sites reporting to EPA | |
|--|---|
| Superfund NPL | 0 |
| Hazardous Waste Treatment, Storage, and Disposal Facilities (TSDF) | 0 |

| Selected Variables | Value | State | | EPA Region | | USA | |
|---|-------|-------|-------|------------|----------|-------|----------|
| | | Avg. | %tile | Avg. | %tile | Avg. | %tile |
| Environmental Indicators | | | | | | | |
| Particulate Matter (PM 2.5 in $\mu\text{g}/\text{m}^3$) | 10.1 | 8.62 | 94 | 8.37 | 97 | 8.3 | 90 |
| Ozone (ppb) | 37 | 36.8 | 54 | 39.4 | 32 | 43 | 18 |
| NATA* Diesel PM ($\mu\text{g}/\text{m}^3$) | 0.619 | 0.454 | 77 | 0.401 | 80-90th | 0.479 | 70-80th |
| NATA* Air Toxics Cancer Risk (risk per MM) | 82 | 51 | 94 | 36 | 95-100th | 32 | 95-100th |
| NATA* Respiratory Hazard Index | 0.73 | 0.61 | 88 | 0.45 | 95-100th | 0.44 | 95-100th |
| Traffic Proximity and Volume (daily traffic count/distance to road) | 430 | 330 | 79 | 400 | 76 | 750 | 64 |
| Lead Paint Indicator (% pre-1960s housing) | 0.027 | 0.21 | 17 | 0.17 | 35 | 0.28 | 20 |
| Superfund Proximity (site count/km distance) | 0.046 | 0.086 | 46 | 0.081 | 55 | 0.13 | 39 |
| RMP Proximity (facility count/km distance) | 0.21 | 0.9 | 40 | 0.82 | 36 | 0.74 | 40 |
| Hazardous Waste Proximity (facility count/km distance) | 0.15 | 0.75 | 33 | 0.75 | 33 | 4 | 27 |
| Wastewater Discharge Indicator (toxicity-weighted concentration/m distance) | 0.034 | 27 | 88 | 9.8 | 87 | 14 | 85 |
| Demographic Indicators | | | | | | | |
| Demographic Index | 38% | 40% | 54 | 44% | 46 | 36% | 61 |
| Minority Population | 55% | 41% | 69 | 51% | 56 | 39% | 70 |
| Low Income Population | 21% | 40% | 21 | 37% | 26 | 33% | 34 |
| Linguistically Isolated Population | 2% | 2% | 74 | 6% | 48 | 4% | 57 |
| Population with Less Than High School Education | 7% | 16% | 25 | 16% | 31 | 13% | 40 |
| Population under Age 5 | 7% | 7% | 61 | 7% | 57 | 6% | 66 |
| Population over Age 64 | 11% | 14% | 33 | 13% | 45 | 15% | 35 |

*The National-Scale Air Toxics Assessment (NATA) is EPA's ongoing, comprehensive evaluation of air toxics in the United States. EPA developed the NATA to prioritize air toxics, emission sources, and locations of interest for further study. It is important to remember that NATA provides broad estimates of health risks over geographic areas of the country, not definitive risks to specific individuals or locations. More information on the NATA analysis can be found at: <https://www.epa.gov/national-air-toxics-assessment>.

For additional information, see: www.epa.gov/environmentaljustice

EJSCREEN is a screening tool for pre-decisional use only. It can help identify areas that may warrant additional consideration, analysis, or outreach. It does not provide a basis for decision-making, but it may help identify potential areas of EJ concern. Users should keep in mind that screening tools are subject to substantial uncertainty in their demographic and environmental data, particularly when looking at small geographic areas. Important caveats and uncertainties apply to this screening-level information,

so it is essential to understand the limitations on appropriate interpretations and applications of these indicators. Please see EJSCREEN documentation for discussion of these issues before using reports. This screening tool does not provide data on every environmental impact and demographic factor that may be relevant to a particular location. EJSCREEN outputs should be supplemented with additional information and local knowledge before taking any action to address potential EJ concerns.